



# HER601 THRU HER608

## 6.0 AMPS. High Efficient Rectifiers



Voltage Range  
50 to 1000 Volts  
Current  
6.0 Amperes

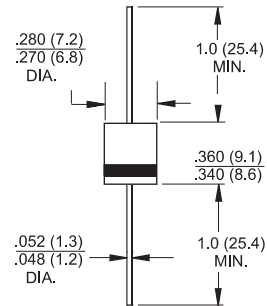
### Features

- ✧ Low forward voltage drop
- ✧ High current capability
- ✧ High reliability
- ✧ High surge current capability

### Mechanical Data

- ✧ Cases: Molded plastic
- ✧ Epoxy: UL 94V-O rate flame retardant
- ✧ Lead: Axial leads, solderable per MIL-STD-202, Method 208 guaranteed
- ✧ Polarity: Color band denotes cathode end
- ✧ High temperature soldering guaranteed: 260°C/10 seconds/.375", (9.5mm) lead lengths at 5 lbs., (2.3kg) tension
- ✧ Weight: 1.65 grams

### R-6



Dimensions in inches and (millimeters)

### Maximum Ratings and Electrical Characteristics

Rating at 25°C ambient temperature unless otherwise specified.

Single phase, half wave, 60 Hz, resistive or inductive load.

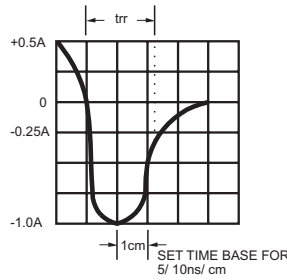
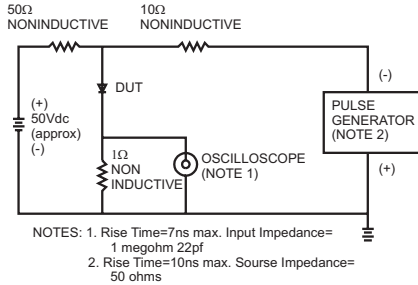
For capacitive load, derate current by 20%

Type Number	Symbol	HER 601	HER 602	HER 603	HER 604	HER 605	HER 606	HER 607	HER 608	Units	
Maximum Recurrent Peak Reverse Voltage	$V_{RRM}$	50	100	200	300	400	600	800	1000	V	
Maximum RMS Voltage	$V_{RMS}$	35	70	140	210	280	420	560	700	V	
Maximum DC Blocking Voltage	$V_{DC}$	50	100	200	300	400	600	800	1000	V	
Maximum Average Forward Rectified Current .375 (9.5mm) Lead Length @ $T_A = 55^\circ C$	$I_{(AV)}$	6.0								A	
Peak Forward Surge Current, 8.3 ms Single Half Sine-wave Superimposed on Rated Load (JEDEC method)	$I_{FSM}$	200								A	
Maximum Instantaneous Forward Voltage @ 6.0A	$V_F$	1.0			1.3		1.7			V	
Maximum DC Reverse Current @ $T_A=25^\circ C$ at Rated DC Blocking Voltage @ $T_A=100^\circ C$	$I_R$	10 200								uA uA	
Maximum Reverse Recovery Time (Note 1)	$T_{rr}$	50					75				nS
Typical Junction capacitance (Note 2)	$C_j$	130					85				pF
Typical Thermal Resistance (Note 3)	$R_{\theta JA}$	30								°C/W	
Operating Temperature Range	$T_J$	-65 to +150								°C	
Storage Temperature Range	$T_{STG}$	-65 to +150								°C	

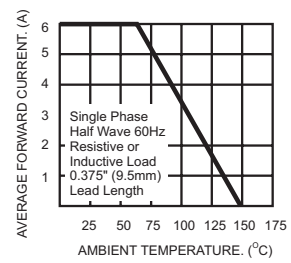
- Notes: 1. Reverse Recovery Test Conditions:  $I_F=0.5A$ ,  $I_R=1.0A$ ,  $I_{RR}=0.25A$   
 2. Measured at 1 MHz and Applied Reverse Voltage of 4.0 V D.C.  
 3. Mount on Cu-Pad Size 16mm x 16mm on PCB.

## RATINGS AND CHARACTERISTIC CURVES (HER601 THRU HER608)

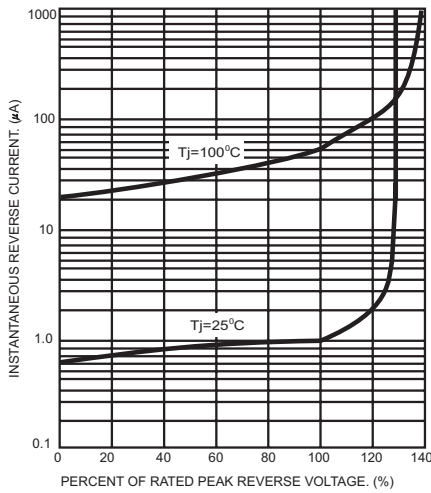
**FIG.1- REVERSE RECOVERY TIME CHARACTERISTIC AND TEST CIRCUIT DIAGRAM**



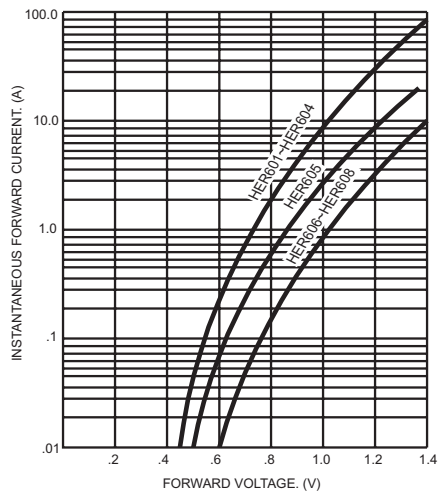
**FIG.2- MAXIMUM AVERAGE FORWARD CURRENT DERATING**



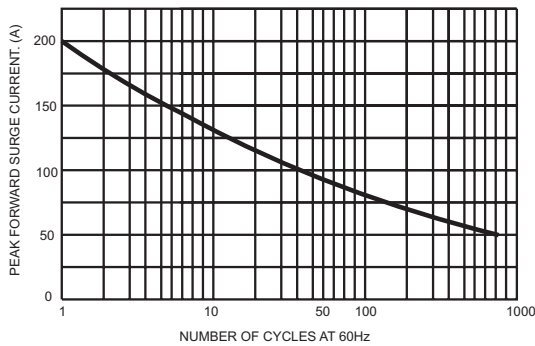
**FIG.3- TYPICAL REVERSE CHARACTERISTICS**



**FIG.5- TYPICAL FORWARD CHARACTERISTICS**



**FIG.4- MAXIMUM NON-REPETITIVE FORWARD SURGE CURRENT**



**FIG.6- TYPICAL JUNCTION CAPACITANCE**

